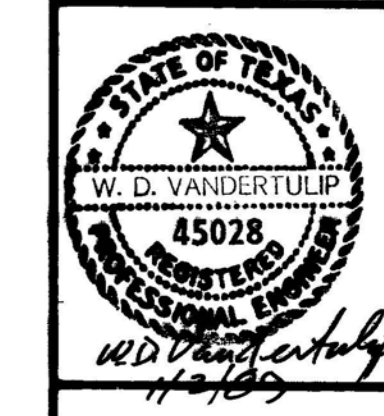






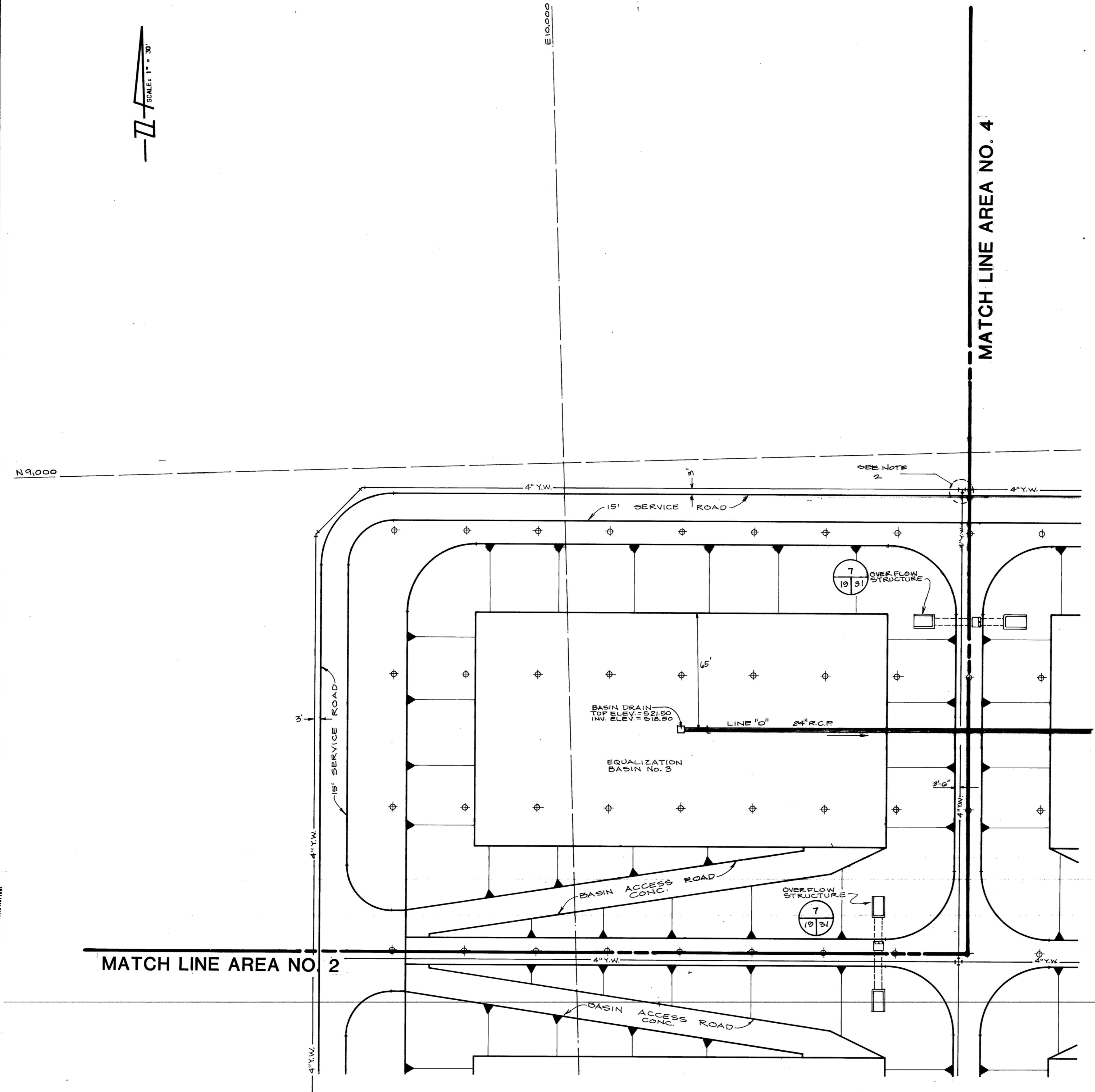
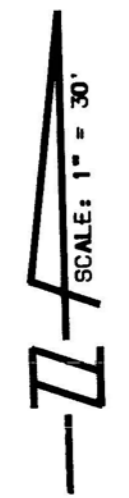


Date DEC, 1988  
 Designed by M.L.  
 Drawn by R.V.H.  
 Checked by J.L.B.  
 Scale 1" = 30'

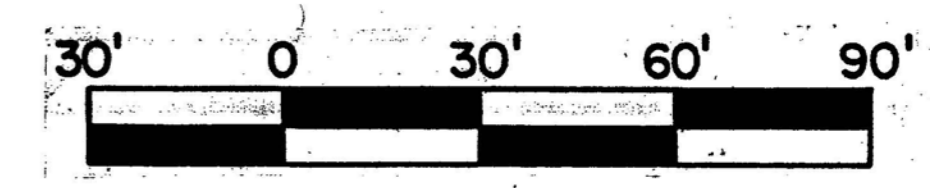
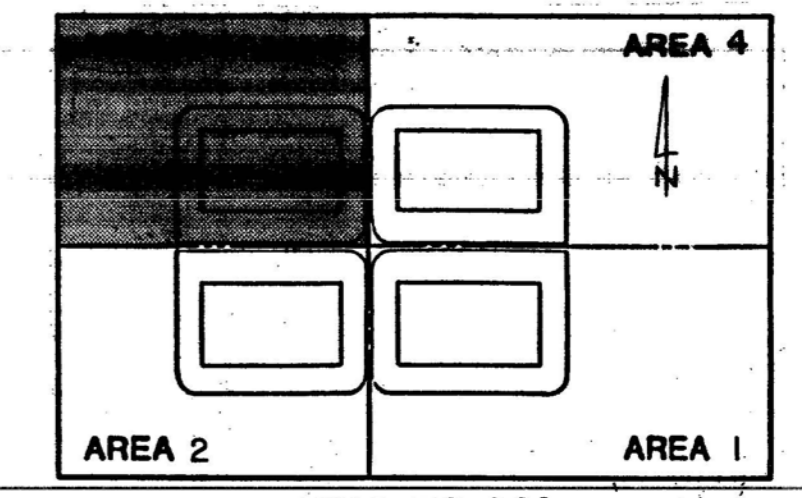


WASTE WATER  
 FACILITIES  
 IMPROVEMENTS  
 San Antonio

LEON CREEK  
 FLOW EQUALIZATION FACILITY  
 YARD PIPING PLAN AREA 3



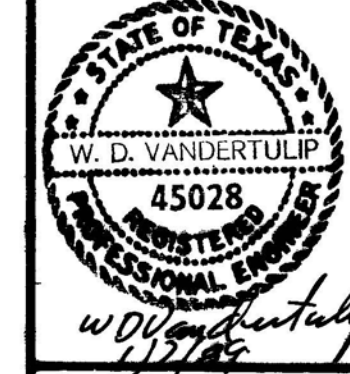
- NOTE:
- FOR DETAILS OF YARD WATER PIPING IN BASIN AREA, SEE SHEET 26 OF 85
  - FOR VALVE LOCATIONS ON THIS SHEET SEE SHEET 26 OF 85



**RECORD DRAWINGS**  
 Revisions Drawn by: *R.V.H.* Date: 12/91  
 THESE RECORD DRAWINGS HAVE BEEN PREPARED, IN PART, ON THE BASIS OF INFORMATION COMPILED BY OTHERS. THEY ARE NOT INTENDED TO REPRESENT IN DETAIL THE EXACT LOCATION, TYPE OR COMPONENT NOS. NUMBER OF CONSTRUCTION. THE ENGINEER WILL NOT BE RESPONSIBLE FOR ANY ERRORS OR OMISSIONS WHICH HAVE BEEN INCORPORATED INTO THE RECORD DRAWINGS.

9110652  
 LC 87-6501



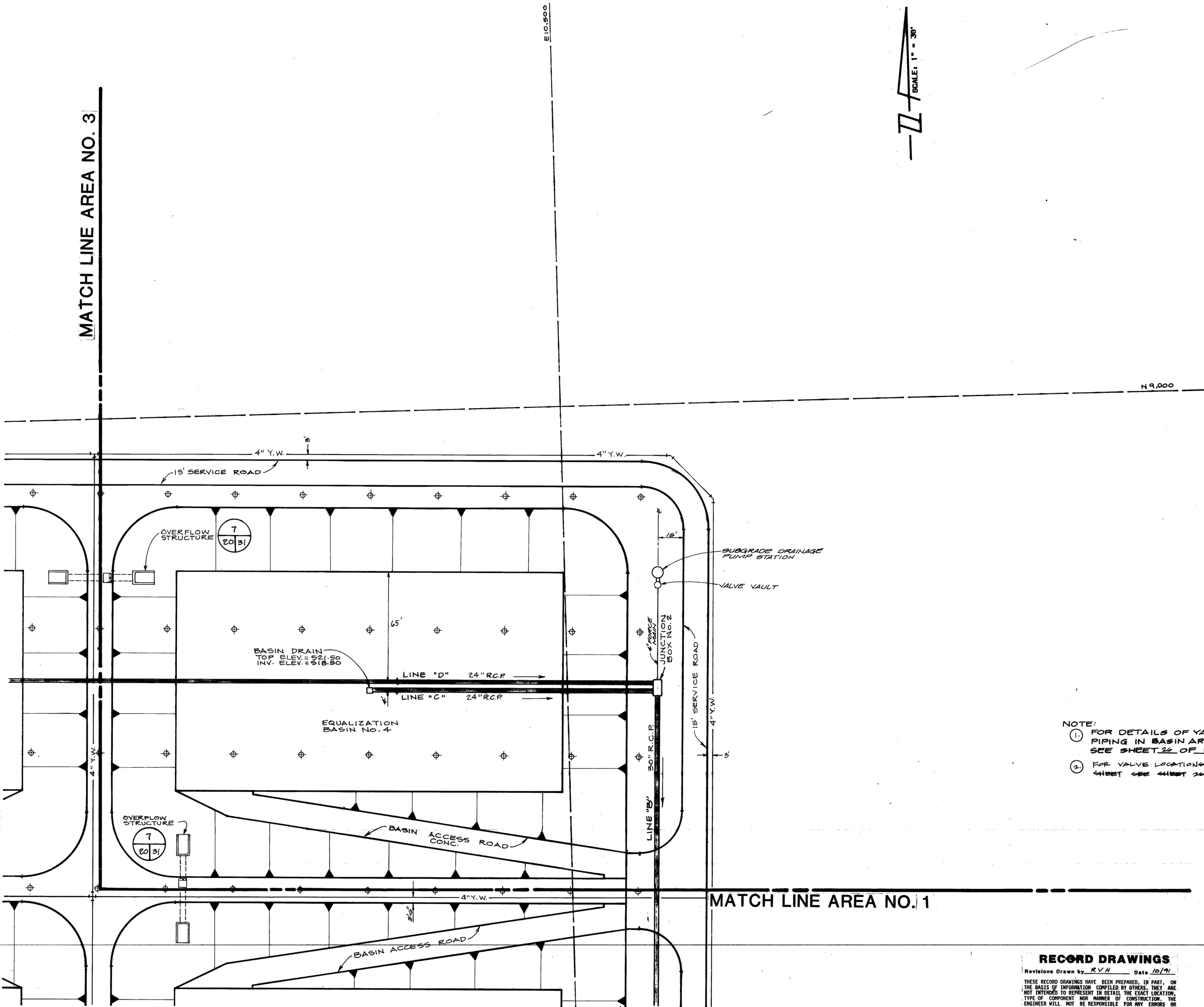


MATCH LINE AREA NO. 3

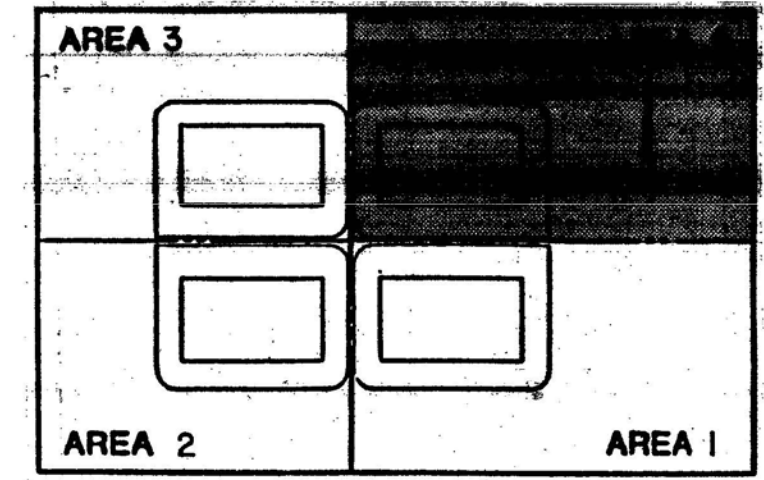
E10.500



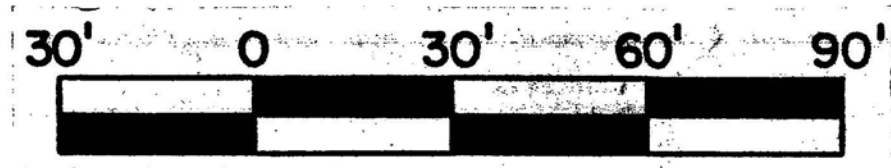
N 9.000



NOTE:  
 (1) FOR DETAILS OF YARD WATER PIPING IN BASIN AREA, SEE SHEET 26 OF 85.  
 (2) FOR VALVE LOCATIONS ON THIS SHEET SEE SHEET 26 OF 85.



KEY PLAN  
N.T.S.



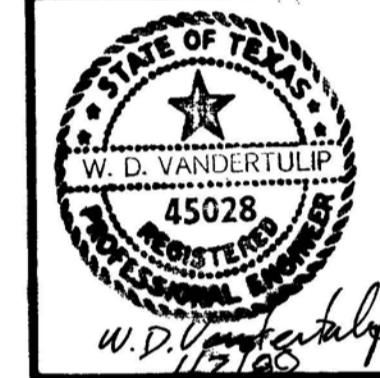
**RECORD DRAWINGS**

Revisions Drawn by R.V.H. Date 10/91  
 THESE RECORD DRAWINGS HAVE BEEN PREPARED, IN PART, ON THE BASIS OF INFORMATION COMPILED BY OTHERS. THEY ARE NOT INTENDED TO REPRESENT IN DETAIL THE EXACT LOCATION, TYPE OF COMPONENT NOR MANNER OF CONSTRUCTION. THE ENGINEER WILL NOT BE RESPONSIBLE FOR ANY ERRORS OR OMISSIONS WHICH HAVE BEEN INCORPORATED INTO THE RECORD DRAWINGS.

9110653  
LC 87-6501



Date: DEC. 1988  
 Designed by: ML  
 Drawn by: AAA/RH  
 Checked by: JLB  
 Scale: 1" = 30'

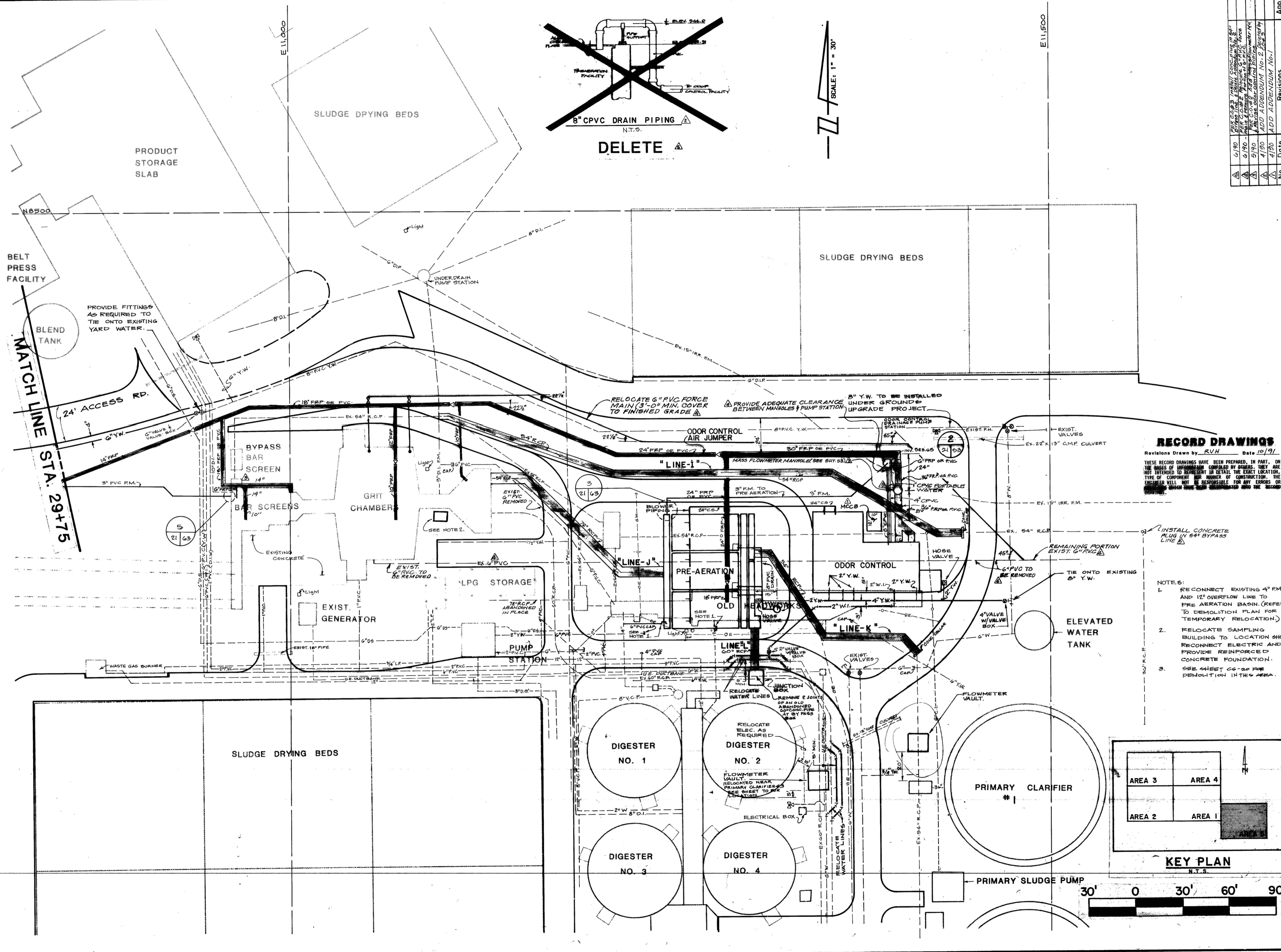


**San Antonio**  
 WASTEWATER FACILITIES IMPROVEMENTS

LEON CREEK FLOW EQUALIZATION FACILITY  
 YARD PIPING PLAN AREA 5

Sheet 21 of 85

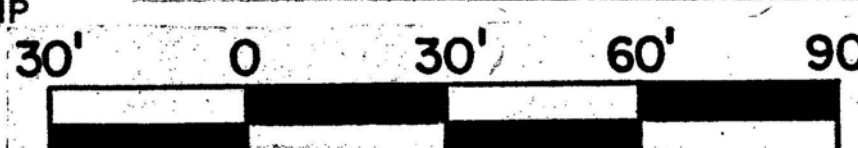
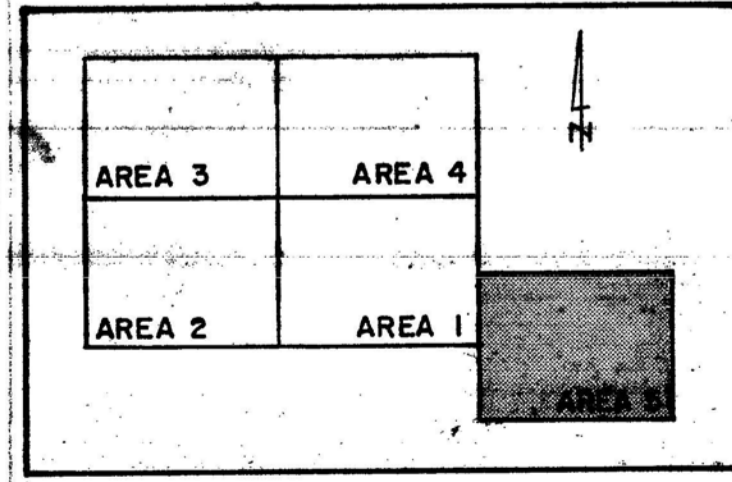
No.	Date	Revisions
1	4/90	ADD APPENDIX NO. 1
2	5/90	ADD APPENDIX NO. 2
3	6/90	ADD APPENDIX NO. 3
4	7/90	ADD APPENDIX NO. 4
5	8/90	ADD APPENDIX NO. 5
6	9/90	ADD APPENDIX NO. 6
7	10/90	ADD APPENDIX NO. 7
8	11/90	ADD APPENDIX NO. 8
9	12/90	ADD APPENDIX NO. 9
10	1/91	ADD APPENDIX NO. 10



**RECORD DRAWINGS**  
 Revisions Drawn by: RVH Date: 10/91

THESE RECORD DRAWINGS HAVE BEEN PREPARED, IN PART, ON THE BASIS OF INFORMATION COMPILED BY OTHERS. THEY ARE NOT INTENDED TO REPRESENT IN DETAIL THE EXACT LOCATION, TYPE OF COMPONENT OR NUMBER OF CONSTRUCTION. THE ENGINEER WILL NOT BE RESPONSIBLE FOR ANY ERRORS OR OMISSIONS WHICH HAVE BEEN INCORPORATED INTO THE RECORD DRAWINGS.

- NOTES:**
- RECONNECT EXISTING 4" FM. AND 12" OVERFLOW LINE TO PRE AERATION BASIN. (REFER TO DEMOLITION PLAN FOR TEMPORARY RELOCATION).
  - RELOCATE SAMPLING BUILDING TO LOCATION SHOWN. RECONNECT ELECTRIC AND PROVIDE REINFORCED CONCRETE FOUNDATION.
  - SEE SHEET C-20 FOR DEMOLITION IN THIS AREA.



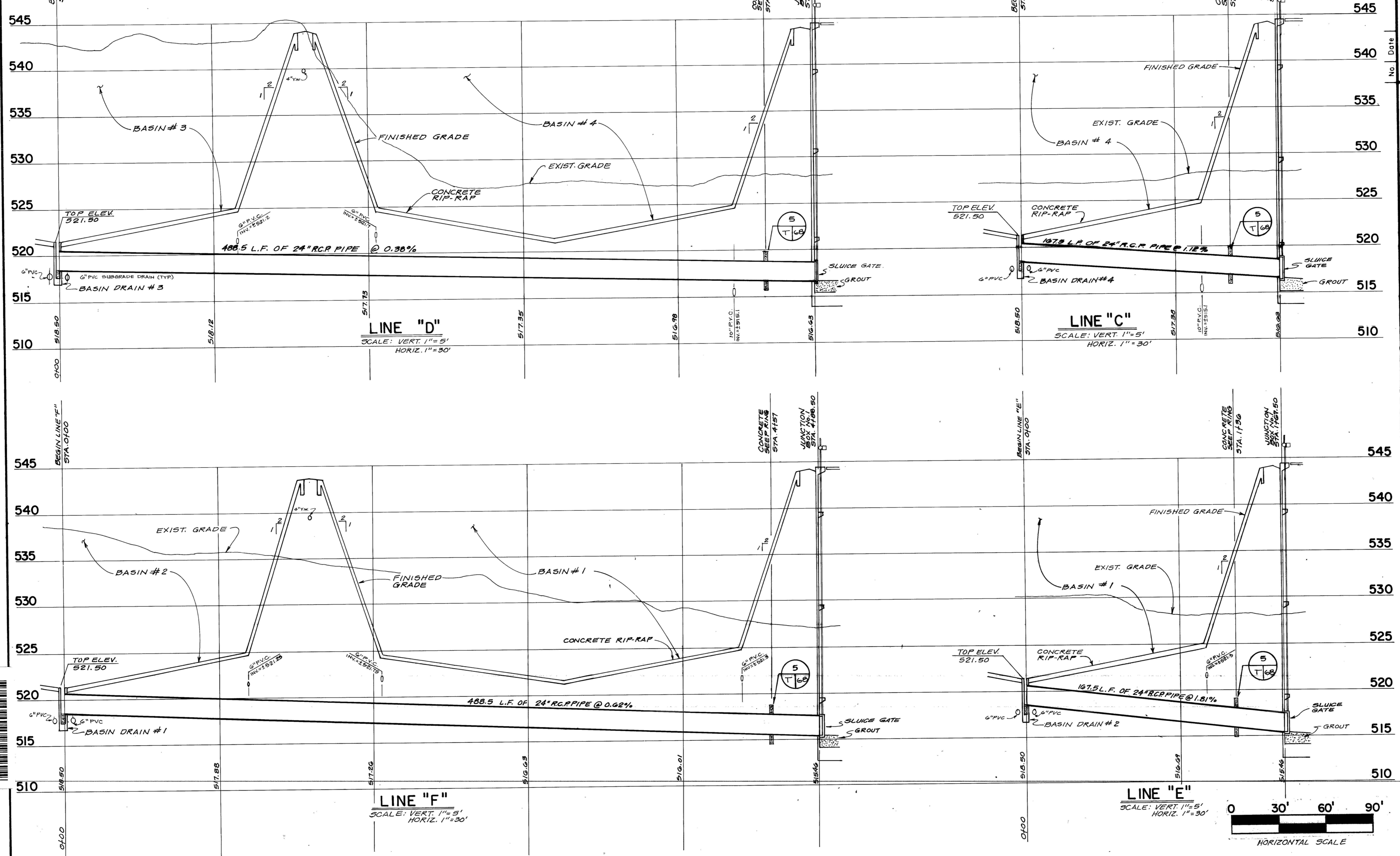
9110654  
 LC 87-6501



**RECORD DRAWINGS**  
 Revisions Drawn by RUH Date 10/91

THESE RECORD DRAWINGS HAVE BEEN PREPARED, IN PART, ON THE BASIS OF INFORMATION COMPILED BY OTHERS. THEY ARE NOT INTENDED TO REPRESENT IN DETAIL THE EXACT LOCATION, TYPE OF COMPONENT NOR MANNER OF CONSTRUCTION. THE ENGINEER WILL NOT BE RESPONSIBLE FOR ANY ERRORS OR OMISSIONS WHICH HAVE BEEN INCORPORATED INTO THE RECORD DRAWINGS.

**TRENCH EXCAVATION PROTECTION**  
 Contractor and/or Contractor's independently retained employee or structural design/geotechnical/safety/equipment consultant, if any, shall review these plans and any available geotechnical information and the anticipated installation site(s) within the project work area in order to develop the Contractor's plans to implement the project described in the contract documents. The Contractor's plans shall provide for adequate trench safety systems that comply with, as a minimum, OSHA standards for trench excavations. Specifically, Contractor and/or Contractor's independently retained employee or safety consultant shall develop and implement a trench safety program in accordance with OSHA standards governing the presence and activities of individuals working in and around trench excavation.



App. Revisions No. Date

**pd va group**

Date: DEC, 1988  
 Designed by: M.L.  
 Drawn by: R.V.H.  
 Checked by: J.L.B.  
 Scale: VERT. 1"=5'  
 HORIZ. 1"=30'

STATE OF TEXAS  
 W. D. VANDERTULIP  
 45028  
 W.D. Vandertulip  
 11/78

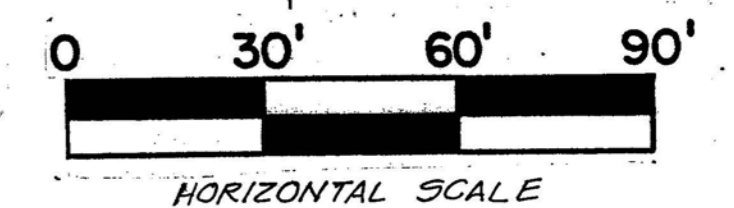
WASTEWATER FACILITIES IMPROVEMENTS

**SAN ANTONIO**

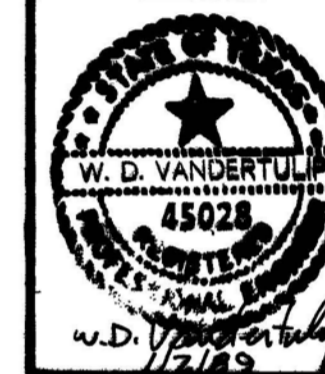
LEON CREEK FLOW EQUALIZATION FACILITY  
 YARD PIPING PROFILES

Sheet 22 of 85

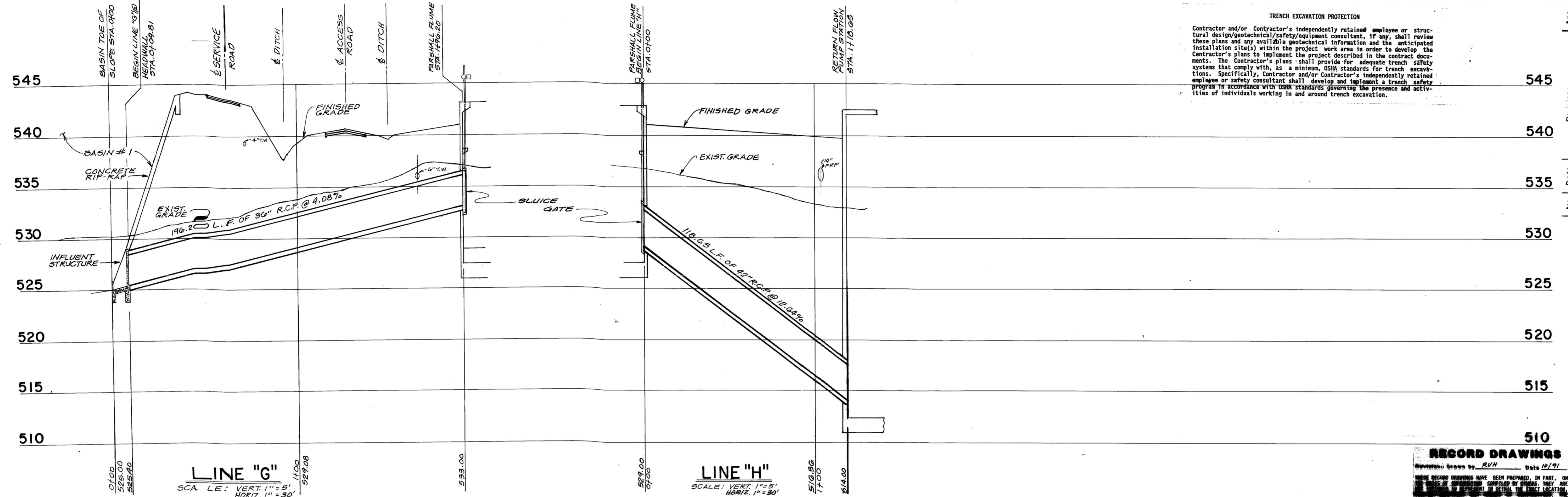
9110655  
 LC 87-6501



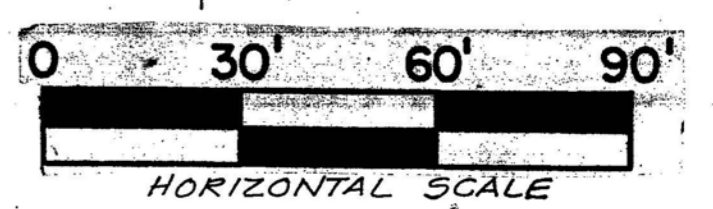
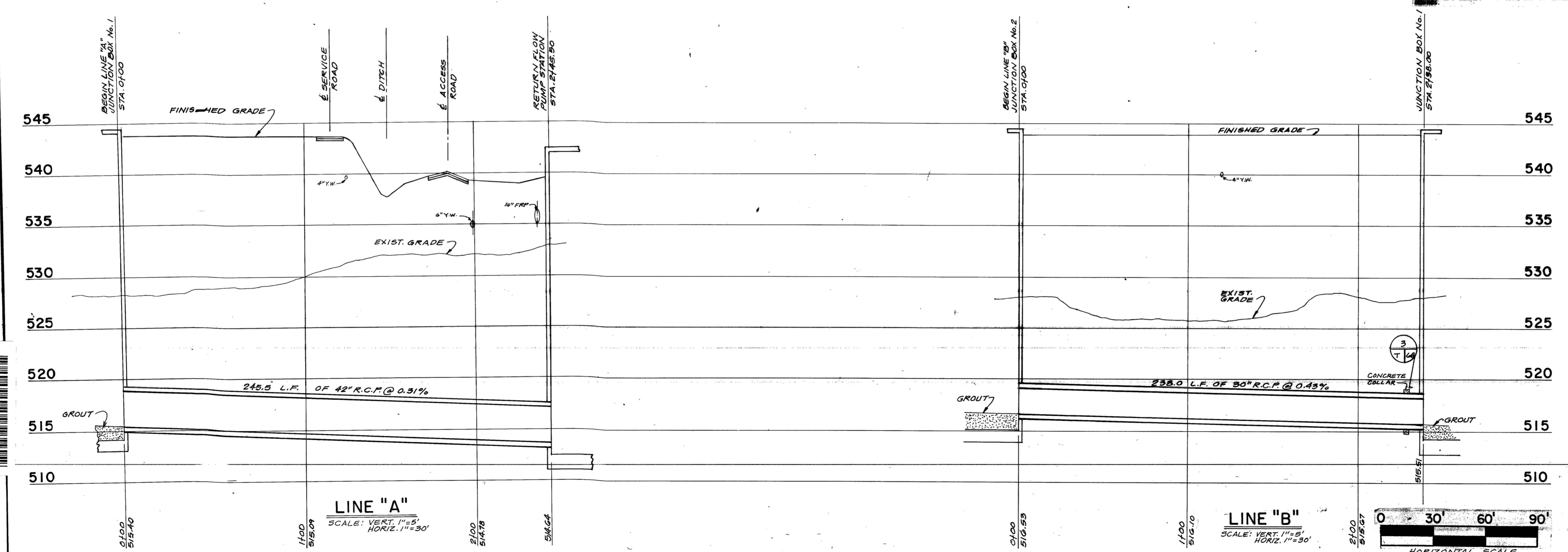




**TRENCH EXCAVATION PROTECTION**  
Contractor and/or Contractor's independently retained employee or structural design/geotechnical/safety/equipment consultant, if any, shall review these plans and any available geotechnical information and the anticipated installation site(s) within the project work area in order to develop the Contractor's plans to implement the project described in the contract documents. The Contractor's plans shall provide for adequate trench safety systems that comply with, as a minimum, OSHA standards for trench excavations. Specifically, Contractor and/or Contractor's independently retained employee or safety consultant shall develop and implement a trench safety program in accordance with OSHA standards governing the presence and activities of individuals working in and around trench excavation.



**RECORD DRAWINGS**  
Revisions: Drawn by R.V.H. Date 12/91  
WHEN RECORD DRAWINGS HAVE BEEN PREPARED, IN PART, OR WHEN RECORD DRAWINGS HAVE BEEN PREPARED BY OTHERS, THEY ARE TO BE USED IN RETAILER IN RETAILER THE EXACT LOCATION. THE CONTRACTOR SHALL BE RESPONSIBLE FOR ANY ERRORS OR OMISSIONS WHICH HAVE BEEN INCORPORATED INTO THE RECORD.



9110656  
LC 87-6501



No.	Date	Revisions
1	6/30	Final

Date DEC. 1, 1988  
 Designed by ML  
 Drawn by AAA  
 Checked by JLB  
 Scale VERT. 1" = 5'  
 HORIZ. 1" = 30'

**San Antonio**

WASTEWATER FACILITIES IMPROVEMENTS

**Leon Creek**

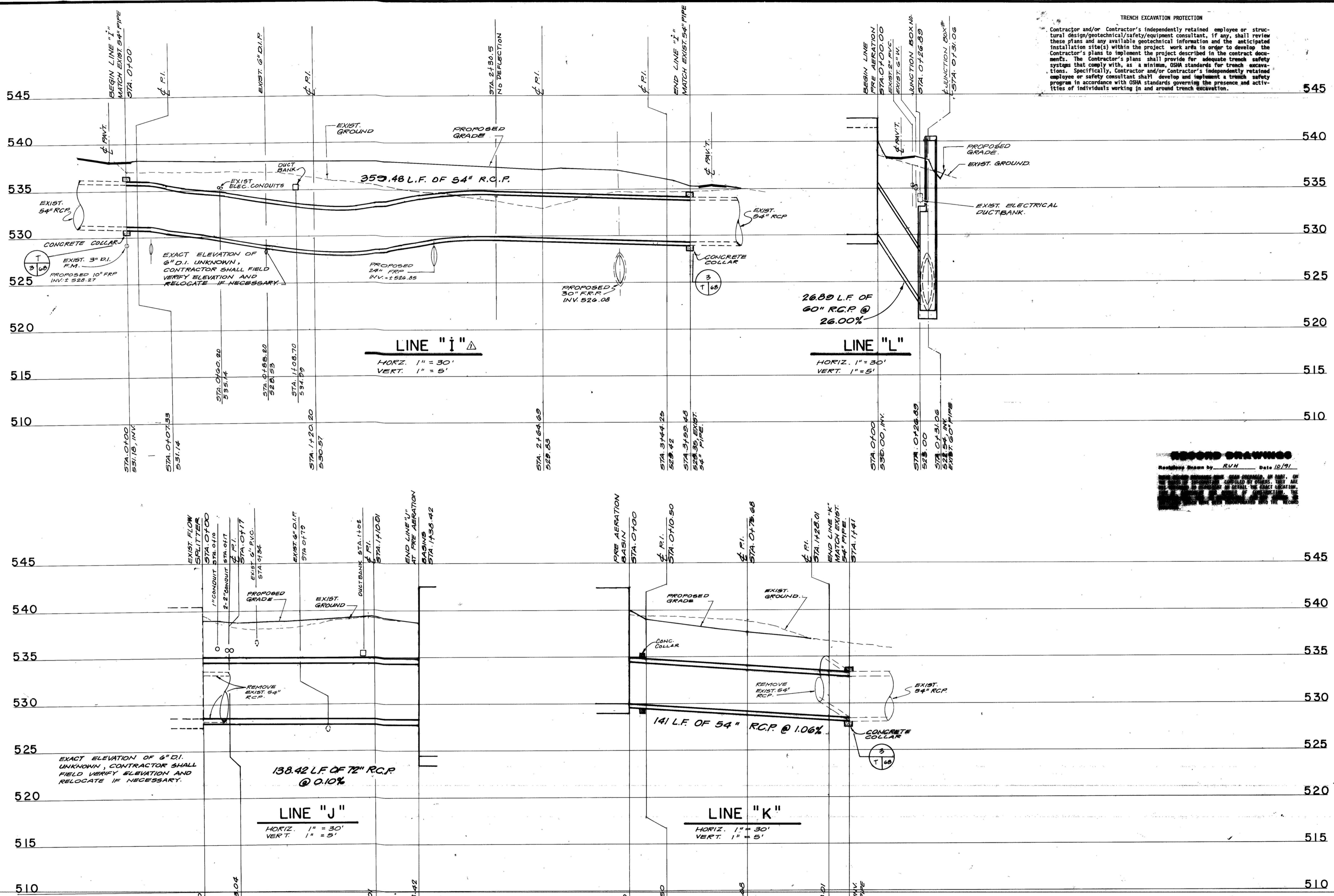
FLOW EQUALIZATION FACILITY

YARD PIRING PROFILES

Sheet 24 of 85

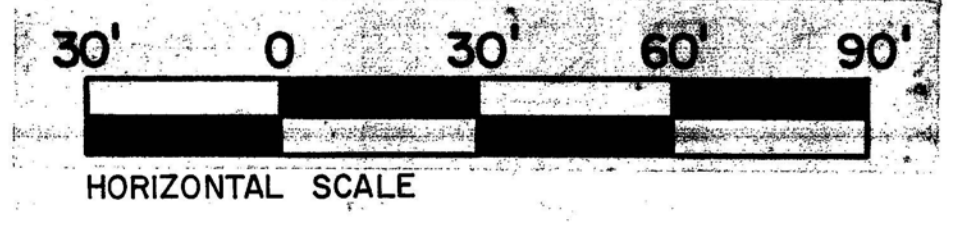
TRENCH EXCAVATION PROTECTION

Contractor and/or Contractor's independently retained employee or structural design/geotechnical/safety/equipment consultant, if any, shall review these plans and any available geotechnical information and the anticipated installation site(s) within the project work area in order to develop the Contractor's plans to implement the project described in the contract documents. The Contractor's plans shall provide for adequate trench safety systems that comply with, as a minimum, OSHA standards for trench excavations. Specifically, Contractor and/or Contractor's independently retained employee or safety consultant shall develop and implement a trench safety program in accordance with OSHA standards governing the presence and activities of individuals working in and around trench excavation.



**SECOND DRAWINGS**

Revised Drawn by RVH Date 10/91



9110657

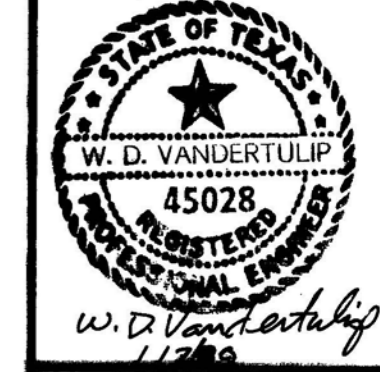
LC 87-6501



**RECORD DRAWINGS**  
 Revisions Drawn by *RVM* Date *10/91*  
 THESE RECORD DRAWINGS HAVE BEEN PREPARED, IN PART, ON THE BASIS OF INFORMATION COMPILED BY OTHERS. THEY ARE NOT INTENDED TO REPRESENT IN DETAIL THE EXACT LOCATION, TYPE OR COMPONENT AND NUMBER OF CONSTRUCTION. THE ENGINEER WILL NOT BE RESPONSIBLE FOR ANY ERRORS OR OMISSIONS WHICH HAVE BEEN INCORPORATED INTO THE RECORD DRAWINGS.

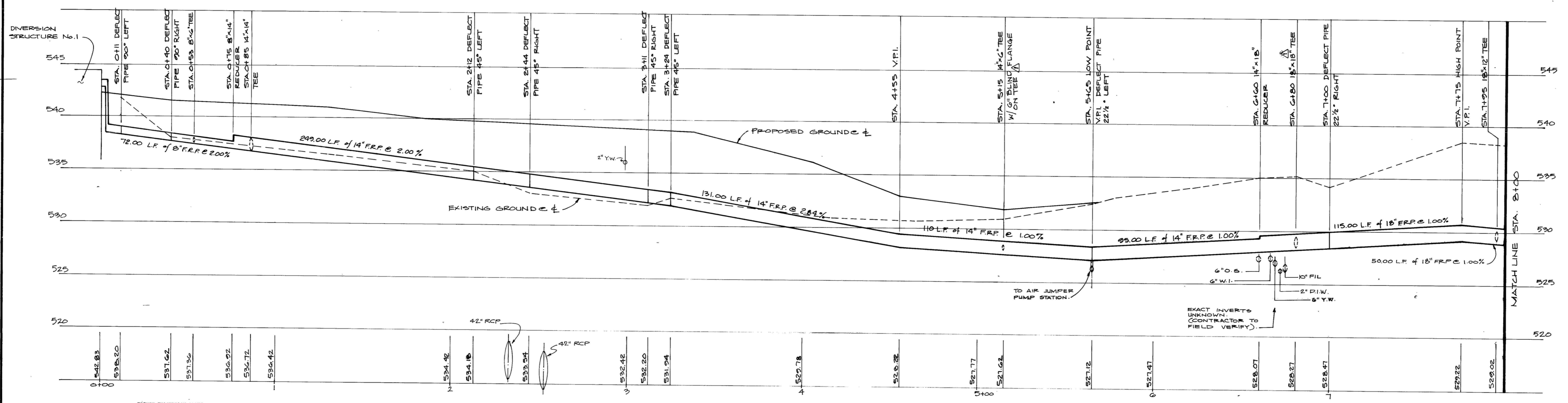
No	Date	Revisions

Date DEC. 1988  
 Designed by D.W.W.  
 Drawn by R.W.K.  
 Checked by J.L.B.  
 Scale AS SHOWN

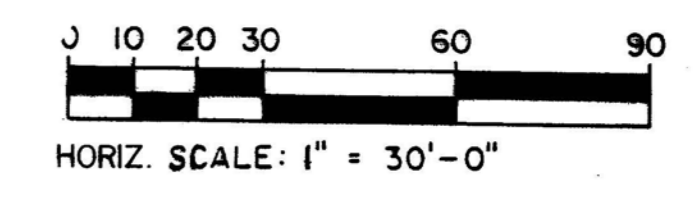


**San Antonio**  
**WASTEWATER FACILITIES IMPROVEMENTS**

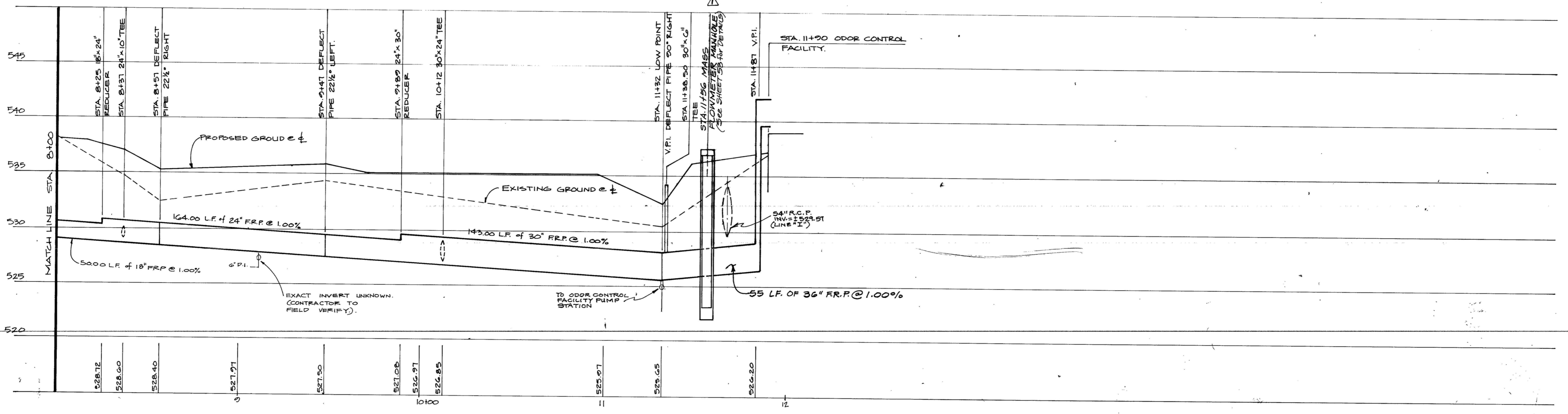
**LEON CREEK  
 FLOW EQUALIZATION FACILITY  
 YARD PIPING PROFILES**



**ODOR CONTROL AIR JUMPER**  
 HORIZ. 1" = 30'-0" VERT. 1" = 5'-0"



Contractor and/or Contractor's independently retained employee or structural design/geotechnical/safety/equipment consultant, if any, shall review these plans and any available geotechnical information and the anticipated installation site(s) within the project work area in order to develop the contractor's plans to implement the project described in the contract documents. The Contractor's plans shall provide for adequate trench safety systems that comply with as a minimum, OSHA standards for trench excavations. Specifically, Contractor and/or Contractor's independently retained employee or safety consultant shall develop and implement a trench safety program in accordance with OSHA standards governing the presence and activities of individuals working in and around trench excavation. Contractor shall be required to provide an on-site representative to insure compliance and review of the trench safety program. Contractor shall be required throughout the construction process to insure that the appropriate safety system(s) is utilized for the soil condition encountered during the construction of the project.



**ODOR CONTROL AIR JUMPER**  
 HORIZ. 1" = 30'-0" VERT. 1" = 5'-0"

9110658

LC 87-6501